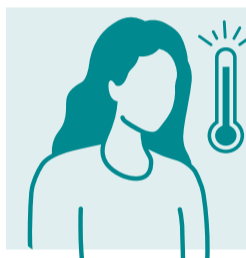


SAFETY
REQUIREMENTS ARE
NOW IN PLACE

**At first sign of any of these symptoms,
get tested then stay home.**



Fever



Runny nose



Sore throat



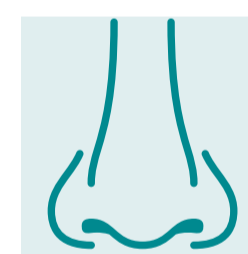
Cough



Chills



Shortness
of breath



Loss of sense
of smell or taste

STAY SAFE
STAY OPEN

For testing locations visit
[CORONAVIRUS.vic.gov.au](https://coronavirus.vic.gov.au)

Authorised by the Victorian Government, 1 Treasury Place, Melbourne

